



Houston, USA



Al Jubail, Saudi Arabia



Coimbatore, India



Kancheepuram, India



Jamnagar, India

Experience The Future of Valves

- ✓ **A Trusted Partner:** An enviable track record spanning 6 decades and over 20 million valves
- ✓ **Portfolio and Range:** Wide variety of valves, offering a solution for every need
- ✓ **Future-ready:** Next-generation technologies to provide unmatched safety and reliability
- ✓ **Maximum Productivity:** Global sales and aftermarket network for quick responses wherever you are
- ✓ **Manufacturing Footprint:** Facilities in USA, Saudi Arabia and India to meet your requirements
- ✓ **A subsidiary of Larsen & Toubro,** a USD 21 billion engineering and technology conglomerate

Large installed base across the world enabling efficient flow-control in all industries

Oil & Gas • Refining • Pipelines • Petrochemicals • Chemicals
Power • Paper & Pulp • Mining & Metallurgy • Water • HVAC
Process Industries • Utilities • Defence & Aerospace



Our major customers:

ADNOC • Chevron • ExxonMobil
IOCL • KNPC • KOC • NTPC
ONGC • PDO • Petronas
Reliance • Saudi Aramco • Shell

EIL • Fluor • JGC • Hyundai
McDermott • Petrofac • Saipem
Samsung • Tecnicas Reunidas
TechnipFMC • Toyo

Butterfly Valves

Elastomer-lined Valves
API 609, CatA

PN10/16/25, #150
Up to 36" (900 mm)



Ball Valves

Floating Ball Valves
ISO 17292, API 608, API 6D

#150 to 2500,
Up to 8" (200 mm)



Gate, Globe & Check Valves

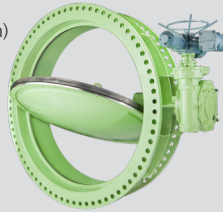
Small-bore Valves
API 602, ASME B16.34

#150 to 4500, Up to 2" (50 mm)



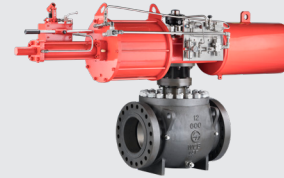
Fabricated Steel Valves
AWWA C 504, C 516, EN 593

PN10 to PN16
Up to 120" (3000 mm)



Trunnion-mounted Valves - Top-entry
API 6D

#150 to 1500, Up to 30" (750 mm)



Pressure-seal Bonnet Valves
ASME B16.34

#600 to 4500, Up to 42" (1050 mm)



Digital Solutions

L&T Valves Asset Management Programme (LAMP)
Smart Valves with diagnostic and communication modules



Triple-offset Butterfly Valves
API 609, CatB

#150 to 1500,
Up to 100" (2500 mm)



Trunnion-mounted Valves - Side-entry
API 6D

#150 to 2500,
Up to 56" (1400 mm)



Bolted-bonnet Valves
API 600, API 603,
API 623, API 594

#150 to 2500,
Up to 72" (1800 mm)



Bronze Valves

Gate, Globe & Check Valves
EN 1171, DIN 3356/2

PN6 to #300,
Up to 40" (1000 mm)



Plug Valves

Double Block & Bleed Valves
API 6D

#150 to 600
Up to 42" (1050 mm)



Knife Gate Valves
MSS SP 81

PN10 and #150,
Up to 24" (600 mm)



Valve Automation Solutions

High Integrity Pressure Protection
Systems (HIPPS)

Emergency Shutdown
Valves (ESDV)

Control Valves

**Globe Valves
Butterfly Valves
Segmented Ball Valves
Eccentric Plug Valves**



Sleeved Plug Valves
ASME B16.34,
EN12516-2

#150 to 800,
Up to 16" (400 mm)



Piston Valves
ASME B16.34, API 602

#150 to 800,
Up to 8" (200 mm)



L&T Valves Limited
L&T Campus, L&T Bypass Road,
Coimbatore - 641 050, INDIA
Email: ContactUs@Lntvalves.com
www.Lntvalves.com

Registered Office: L&T House, N. M. Marg, Ballard Estate,
Mumbai - 400 001, INDIA